



Certificate of planted tree

This proves that

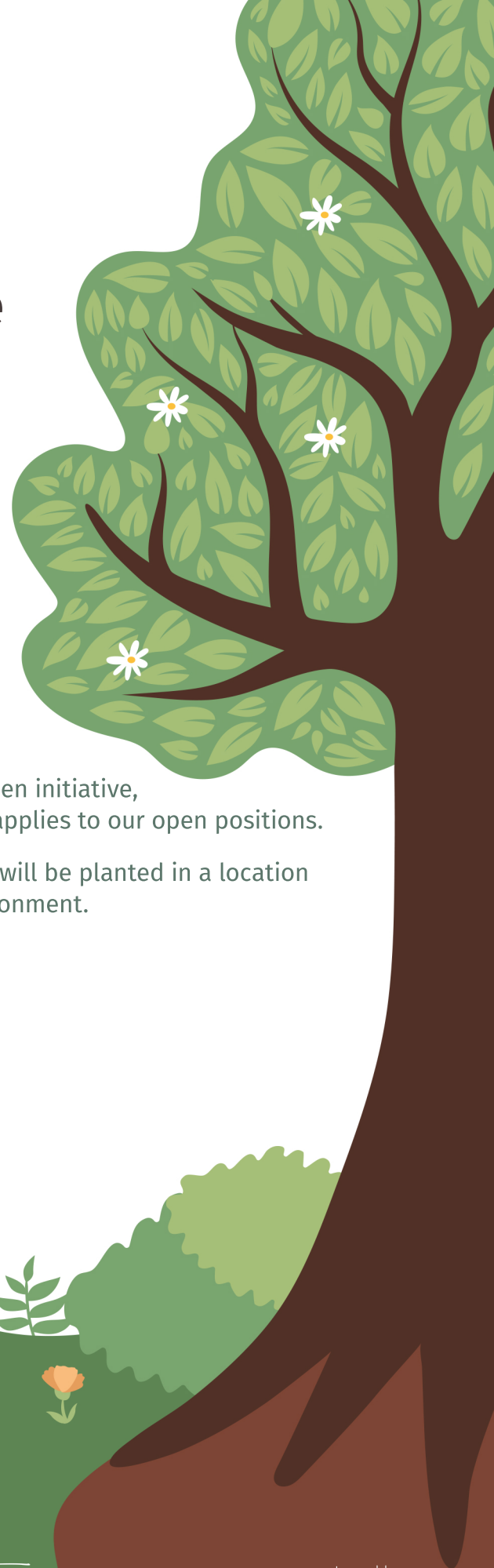
**WE WILL PLANT 1 TREE
ON YOUR BEHALF.**

**Thanks for applying to Capgemini,
you are a tree-mendous candidate!**

You have taken the first step towards growing with us – **we will plant a tree in return.** As a part of our Green initiative, we will be planting a tree on behalf of each candidate who applies to our open positions.

We have partnered with Sázíme Česko to ensure that a tree will be planted in a location where it can make the greatest positive impact on the environment. So you are helping us grow our planet!

#GetTheFutureYouWant #PlantATree #JoinCapgemini



Capgemini Czech Republic
goes green.

Richard Krajník
Co-founder of Sázíme Česko

Issued by:
PlanetWe Rewild s.r.o.,
Na Dělostřilnách 1060/4, 162 00
Praha 6, IČ 1173204

Frequently asked questions



Sázíme
Česko

Who plants the trees and where?

We – Sázíme Česko (PlanetWe Rewild s.r.o.) – do tree planting throughout the country. You can find exact locations, types of trees and photos on our website or social platforms.

Where do we plant the trees?

We plant trees throughout many forests in the Czech Republic. These forest locations need to be restored due to damage after the bark beetle disaster. Most of the forests belong to small private owners. You can find all the information on our website.

When do we plant trees?

We plant in spring and autumn, when the conditions are best for new trees to grow and tighten, allowing a healthy new forest to grow. Seedlings must be secured in advance and everything must be planned carefully, because it takes approximately 6 months for the saplings to get a firm hold into the soil.

How and what kind of trees do you plant?

We plant all types of trees – beeches, oaks, maples, firs, pines and others. We do not plant monocultures. We plant colourful forests according to a map of potential natural vegetation, which shows what varieties will grow naturally in the given locations.

Will somebody take care of the trees?

Yes, of course! We have secured contracts with the land owners, who commit to take proper care of the forest we plant so they can grow and flourish for many years to come.

How can the trees help the nature?

Trees create what we call nature. They provide homes for animals. They retain water in the landscape to prevent erosion. They help fight climate change and make our homes and land more beautiful.