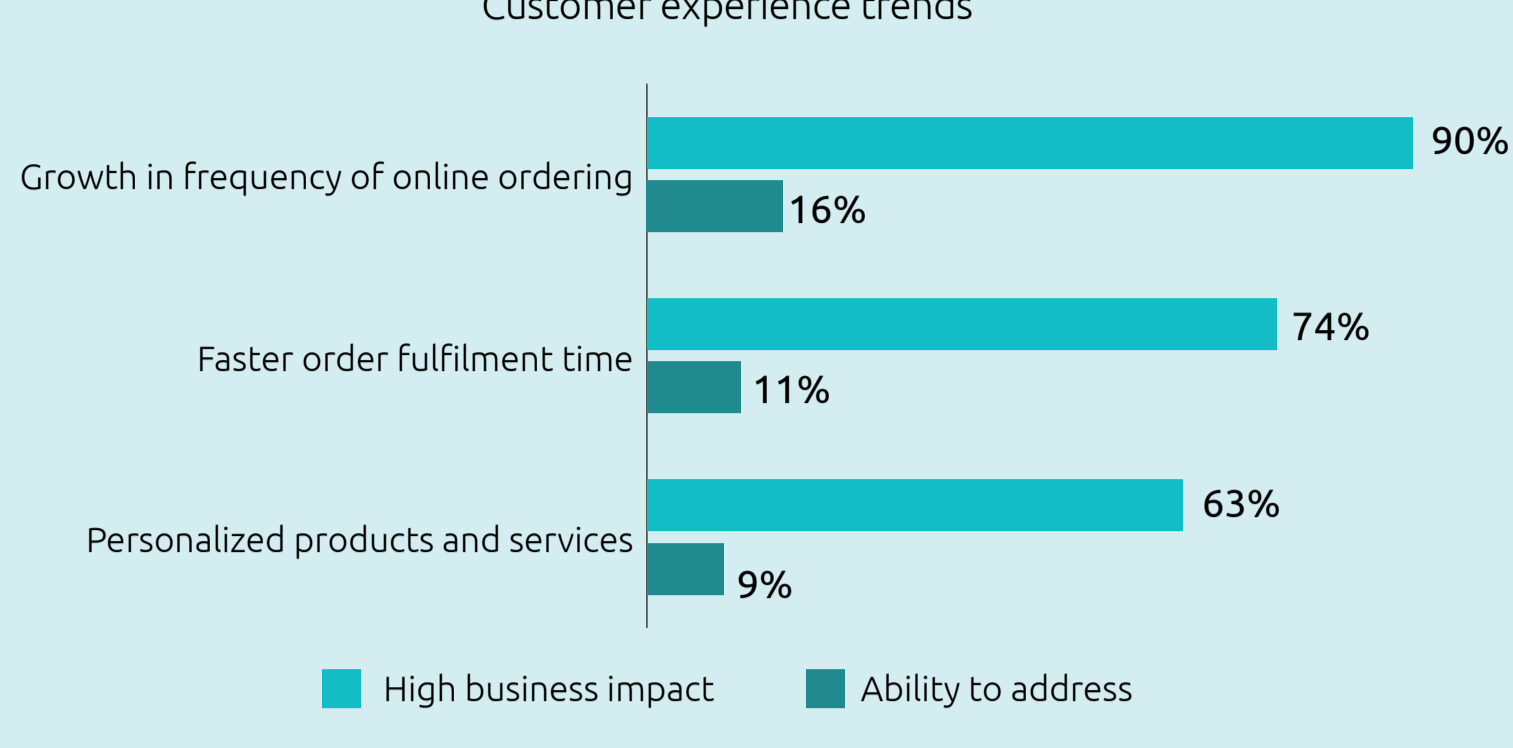


HOW GREATER INTELLIGENCE COULD Supercharge supply chains

Augmented resilience, performance, and sustainability will allow organizations to take a customer-centric focus

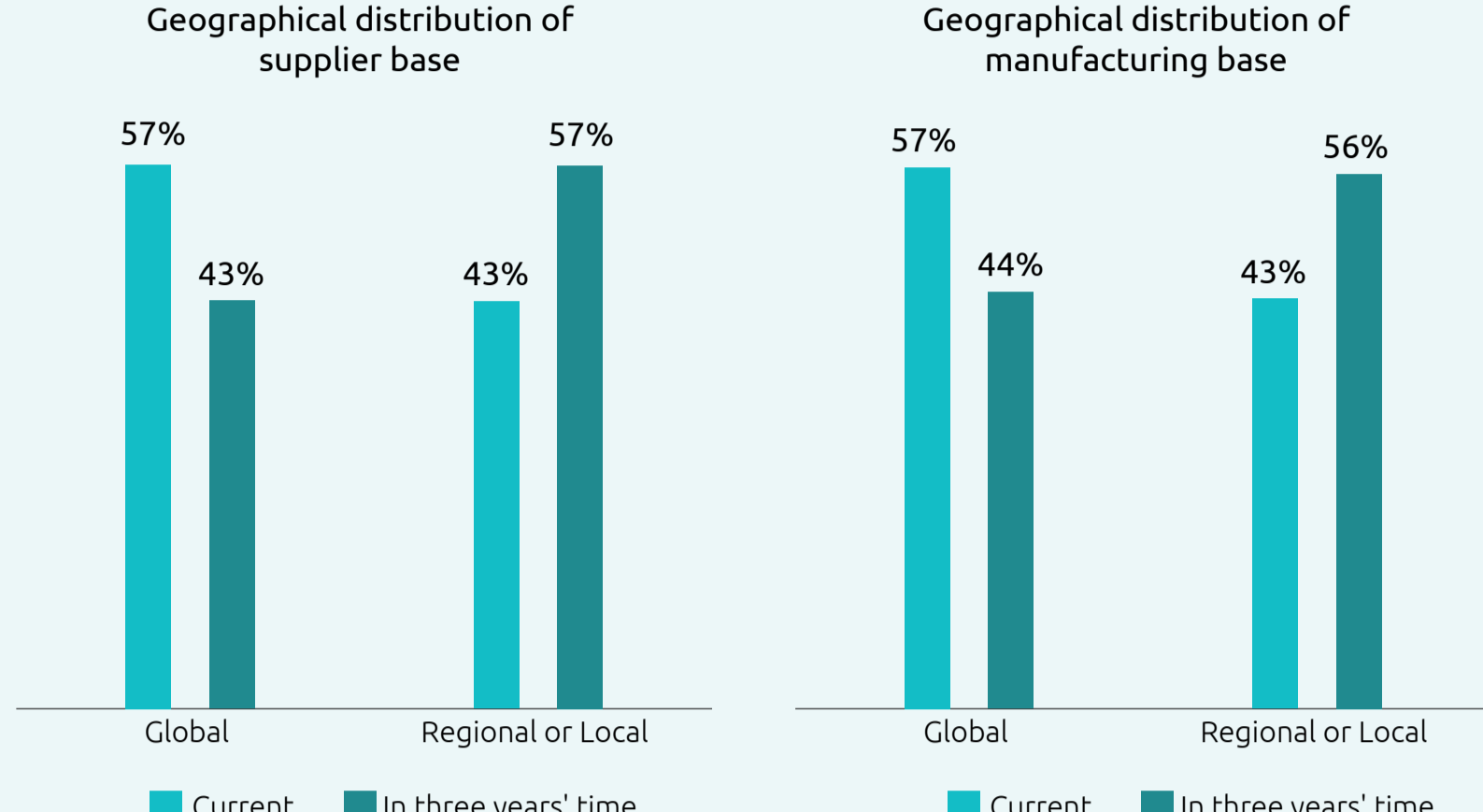
Organizations are struggling to embrace the new supply-chain paradigm

Organizations are poorly prepared to offer a more connected, hyper-personalized real-time customer experience



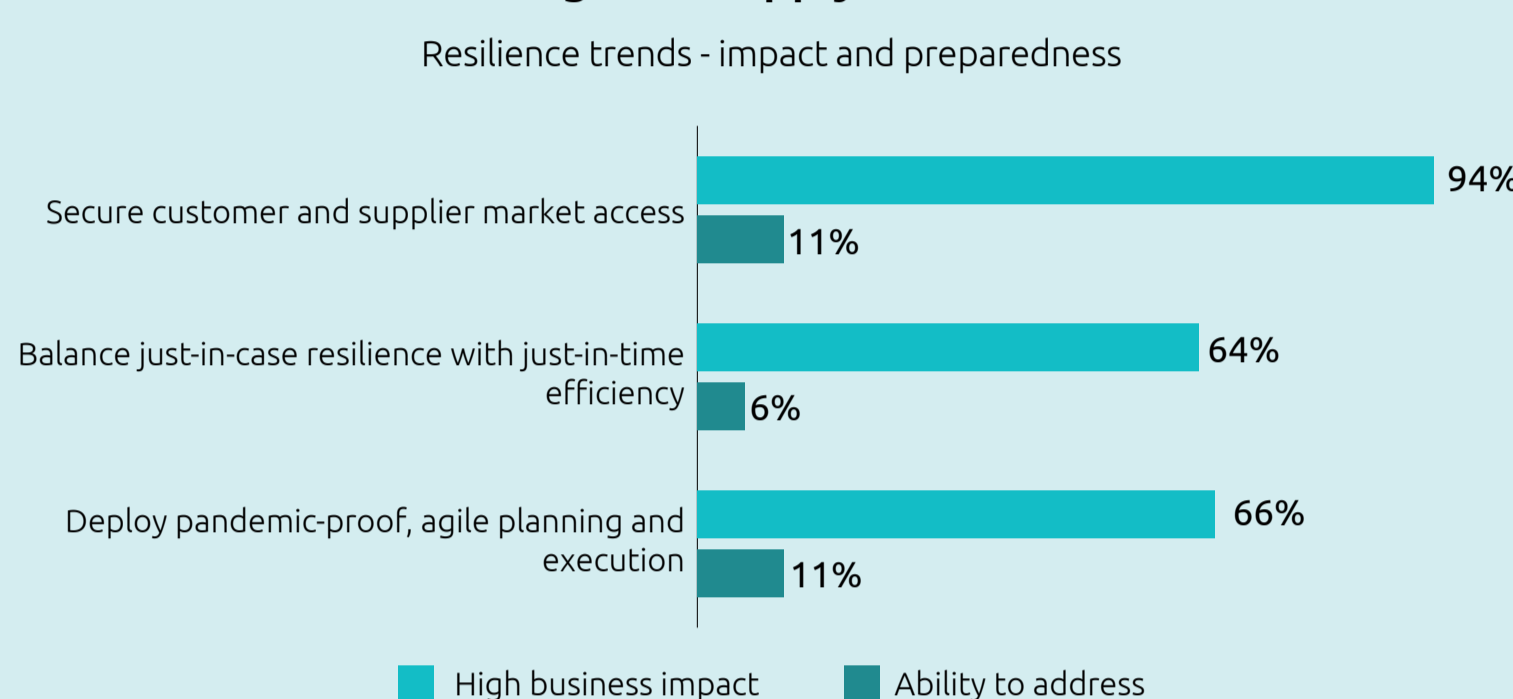
Source: Capgemini Research Institute, Intelligent Supply Chain Research, August–September 2022.

25% of global trade will relocate in the next three years



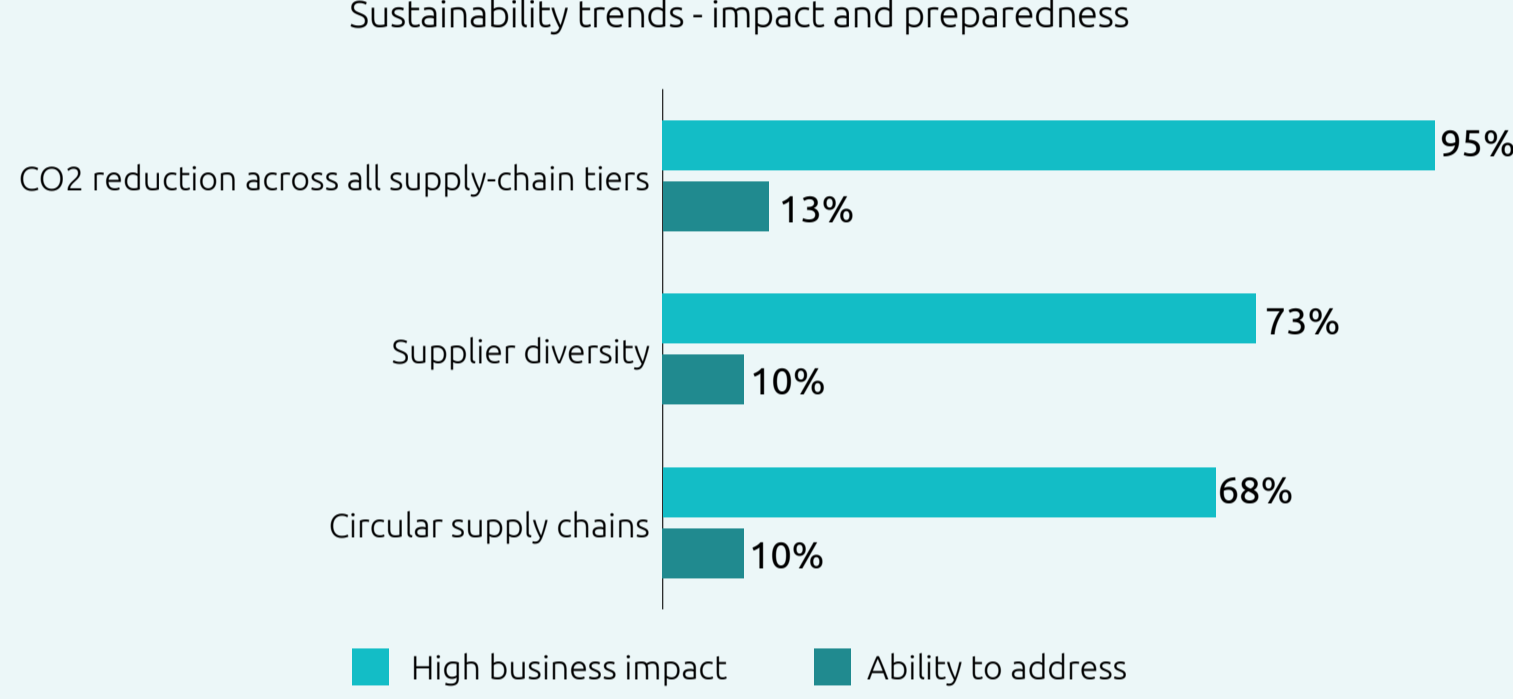
Source: Capgemini Research Institute, Intelligent Supply Chain Research, August–September 2022.

Organizations are poorly equipped to handle the impact of resilience on the global supply chain



Source: Capgemini Research Institute, Intelligent Supply Chain Research, August–September 2022.

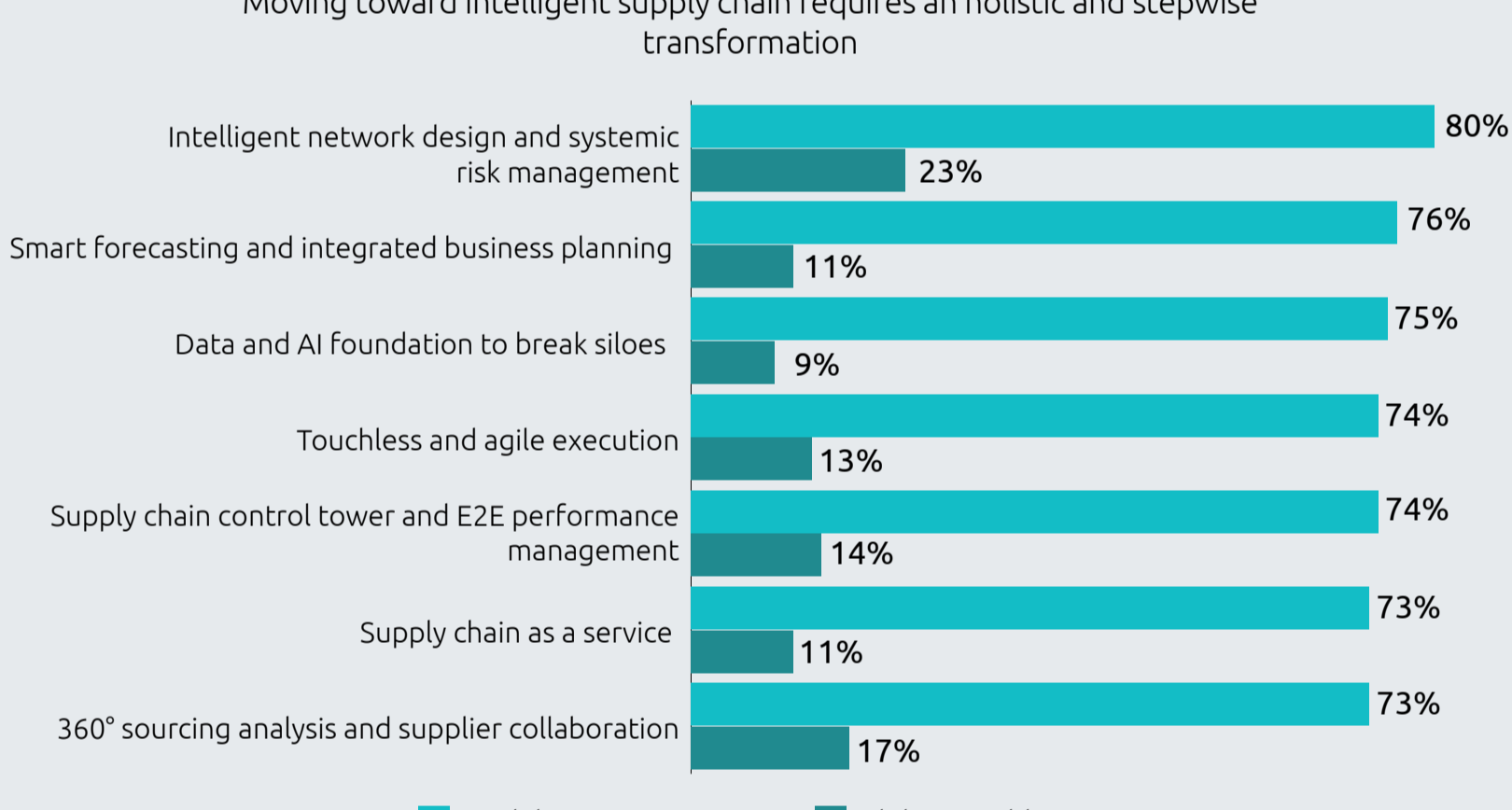
The transition to a sustainable supply chain will be a long journey



Source: Capgemini Research Institute, Intelligent Supply Chain Research, August–September 2022.

Supply-chain changes happen slowly

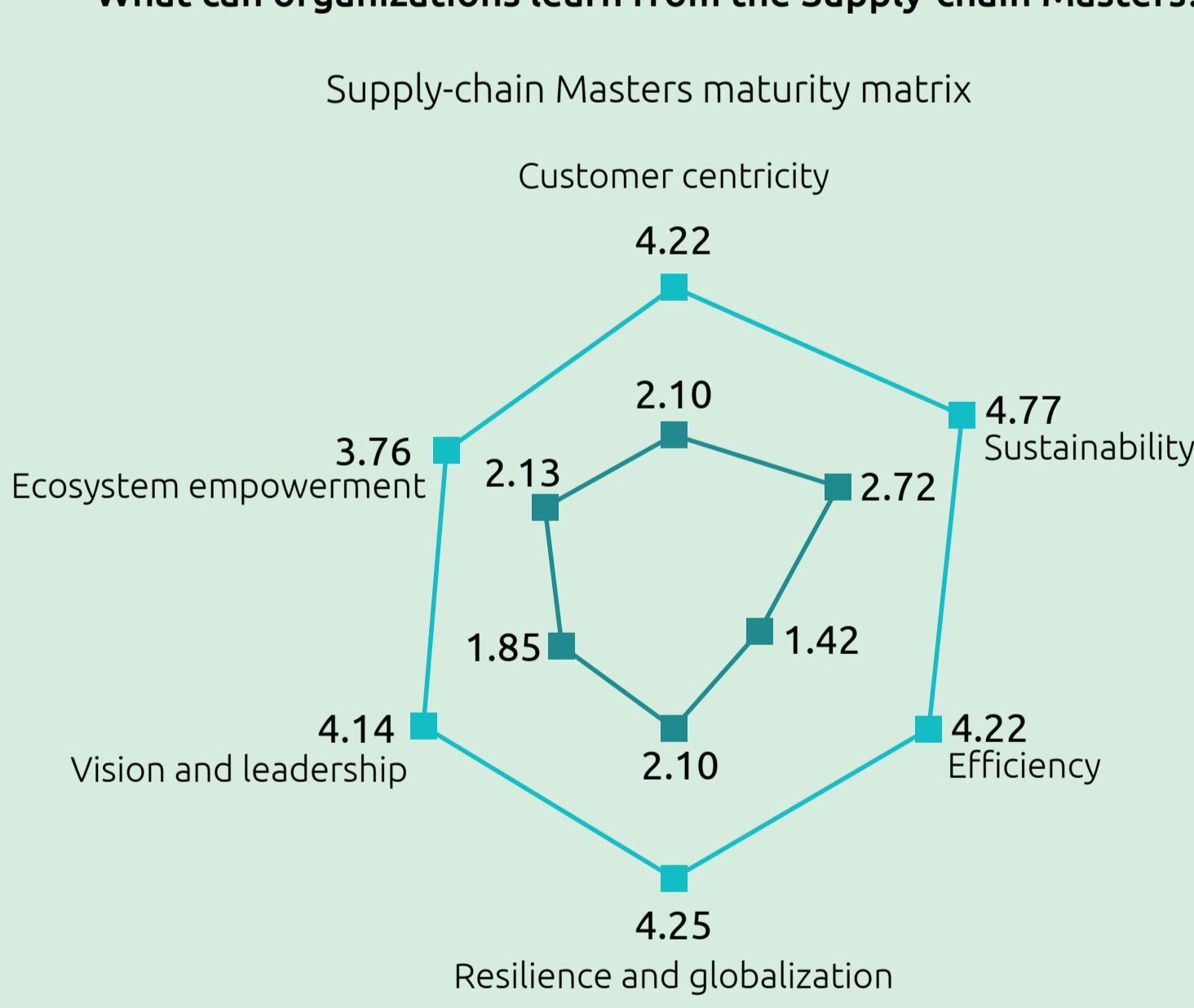
Intelligent supply chain : A holistic and stepwise transformation



Source: Capgemini Research Institute, Intelligent Supply Chain Research, August–September 2022.

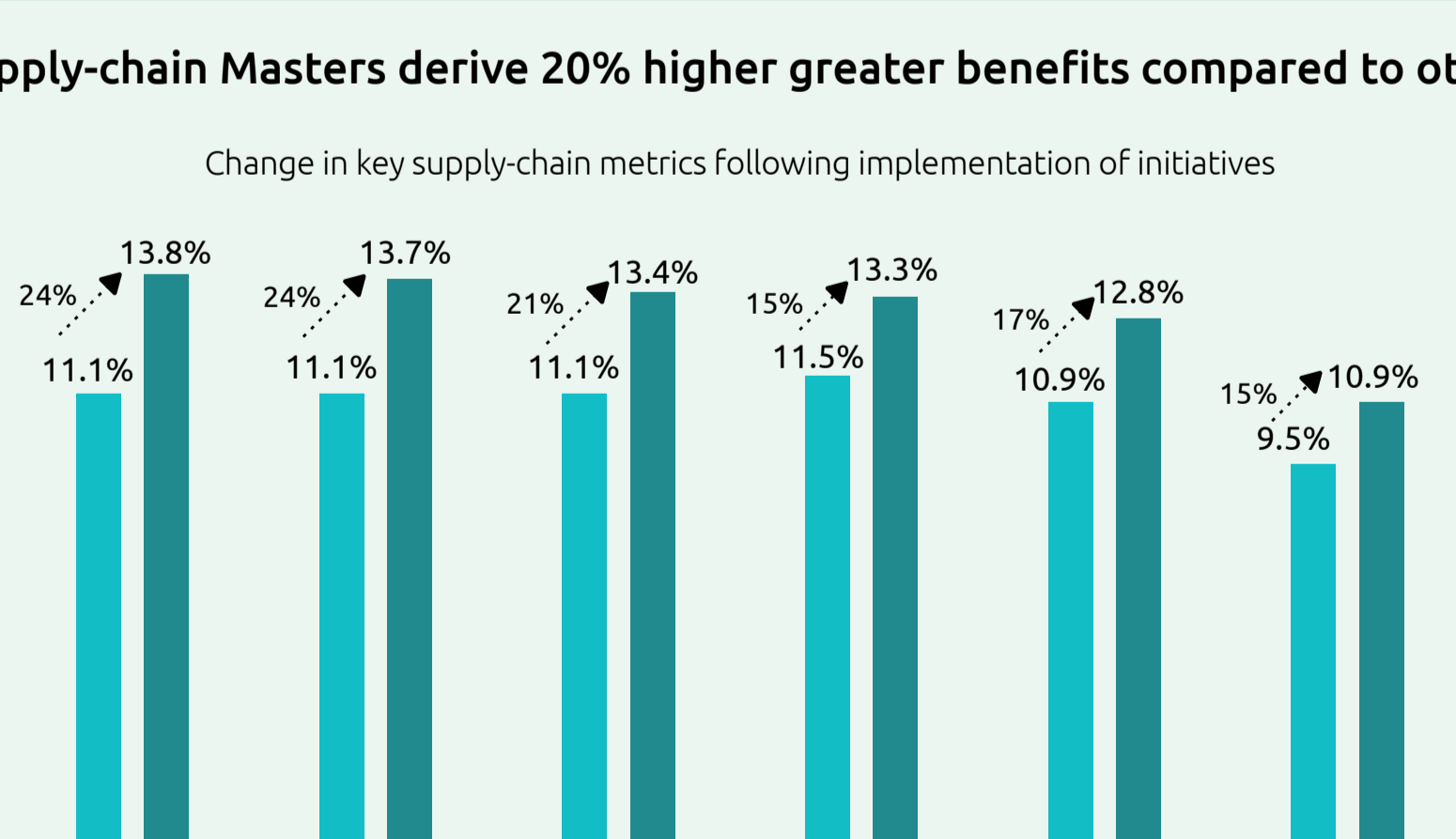
The many benefits of revisiting supply-chain architecture

What can organizations learn from the Supply-chain Masters?



Source: Capgemini Research Institute, Intelligent Supply Chain Research, August–September 2022.

Supply-chain Masters derive 20% higher greater benefits compared to others



Source: Capgemini Research Institute, Intelligent Supply Chain Research, August–September 2022.

How to overcome obstacles on the road to supply-chain transformation

Guidelines to move towards an intelligent supply chain

- REASSESS THE FUTURE READINESS OF YOUR SUPPLY CHAIN TO EMBRACE THE NEW SUPPLY CHAIN PARADIGM IN ACTION**
 - Start by analyzing the impact of emerging trends on your supply chain and assess your readiness to capture any benefits
 - Recognize missed opportunities over the past few years and test areas of vulnerability to measure progress
 - Embrace technology and automation as part of your organization's operational culture
- BUILD CAPABILITIES AND SCALE TECHNOLOGIES AS A PART OF A COMPOSABLE AND INTEGRATED ARCHITECTURE**
 - Incorporate integrated control tower and digital twins into your supply-chain management systems
 - Invest in skills and capability building
 - Clearly define roles and responsibilities to balance multiple demands
- BUILD A DATA-DRIVEN AND COLLABORATIVE CULTURE ACROSS BOTH INTERNAL AND EXTERNAL ECOSYSTEMS**
 - Create data-driven supplier and customer relationships
 - Reassess relationships across the supply chain through both resilience and sustainability lens

Source: Capgemini Research Institute analysis.

[Download report](#)

[Subscribe to our research](#)